

A close-up photograph of a wooden bassoon, showing the intricate details of its body, keys, and brass fittings. The wood has a warm, reddish-brown tone, and the brass parts are polished and gleaming. The background is softly blurred, showing other instruments in a museum or workshop setting.

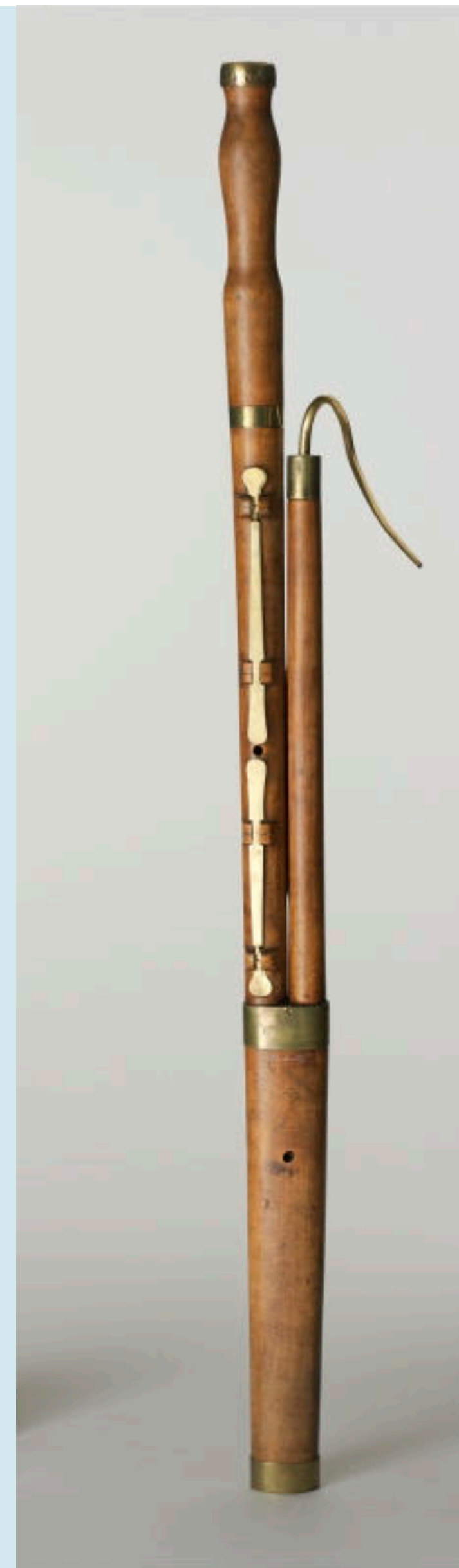
Vývoj koncertní kopie  
podle  
originálního dechového nástroje  
(fagotu)

MA. et MA. Ondřej Šindelář, DiS.



# Originál

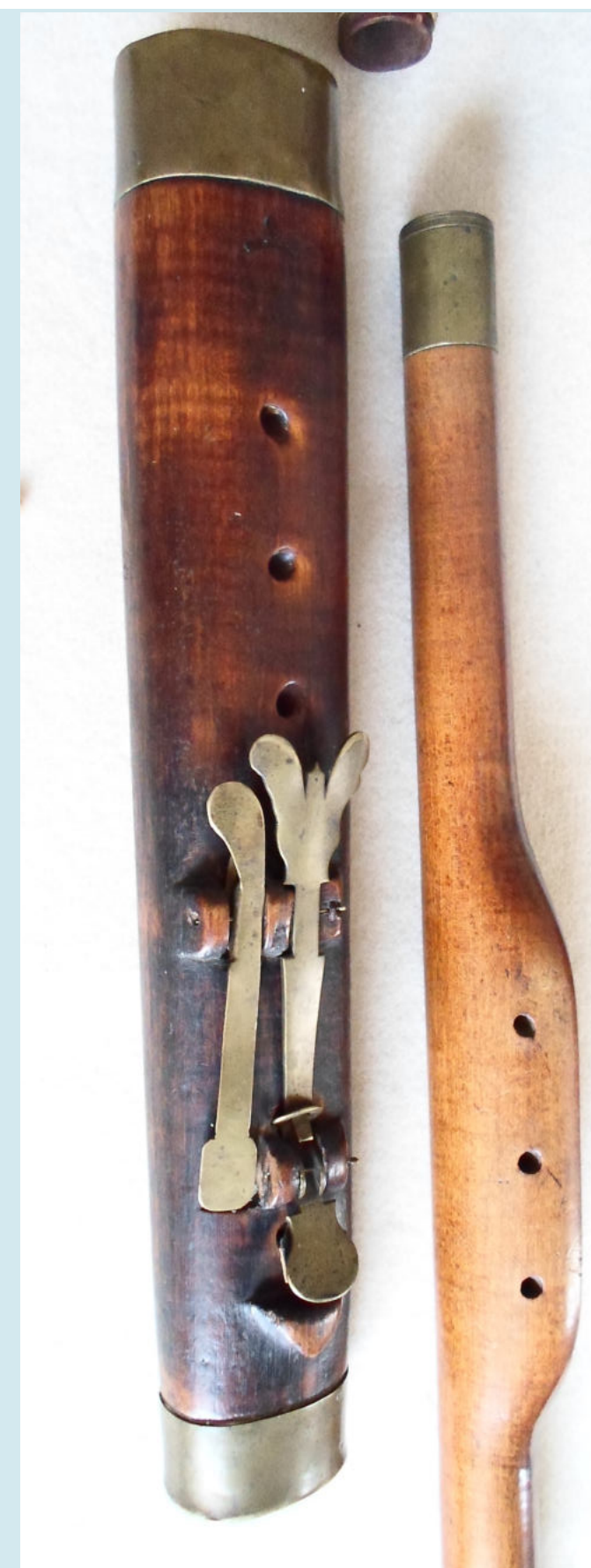
Johann Heinrich EICHENTOPF





# Originál

Johann POERSCHMANN





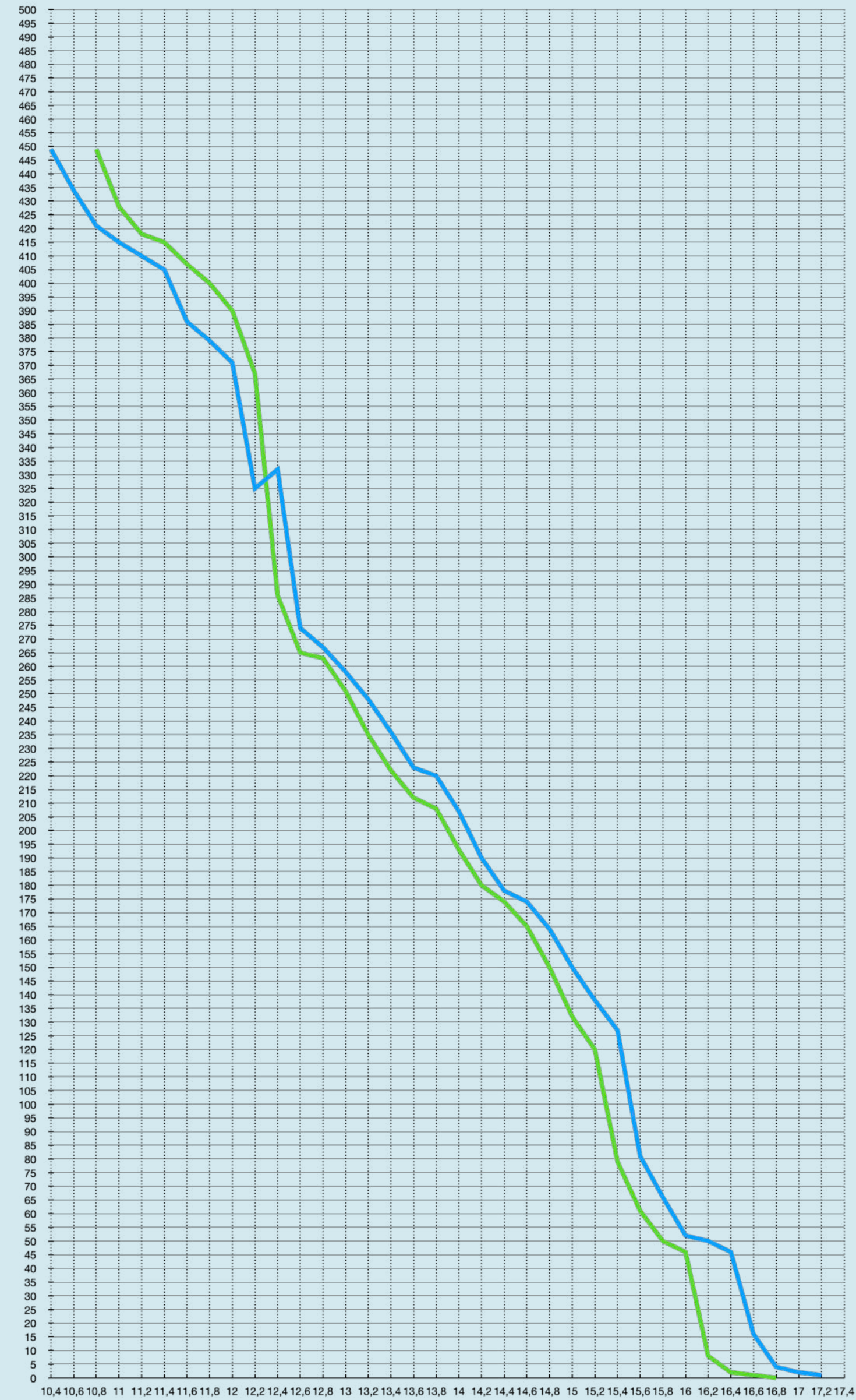
# Originál

Johann Cornelius SATTLER



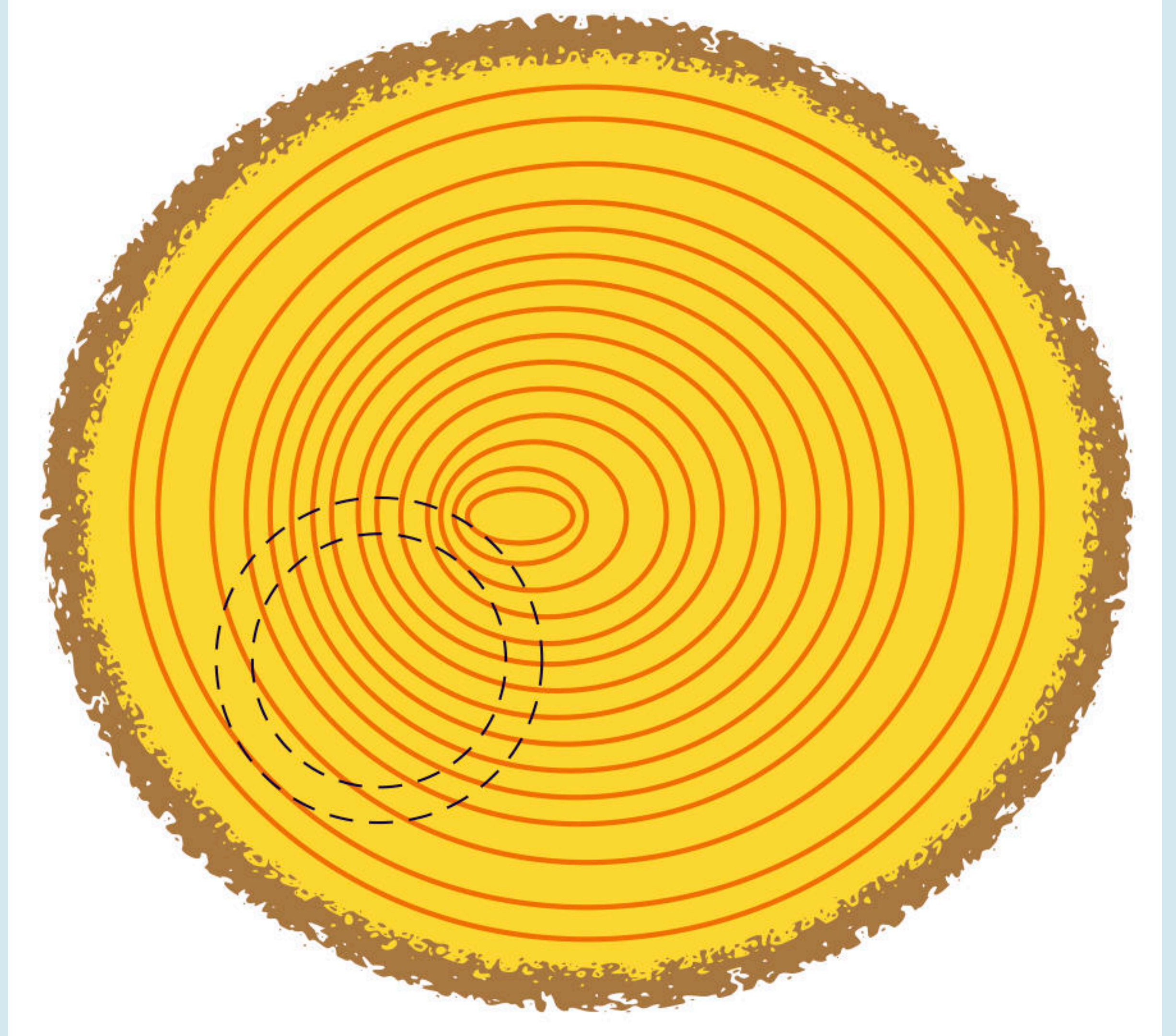
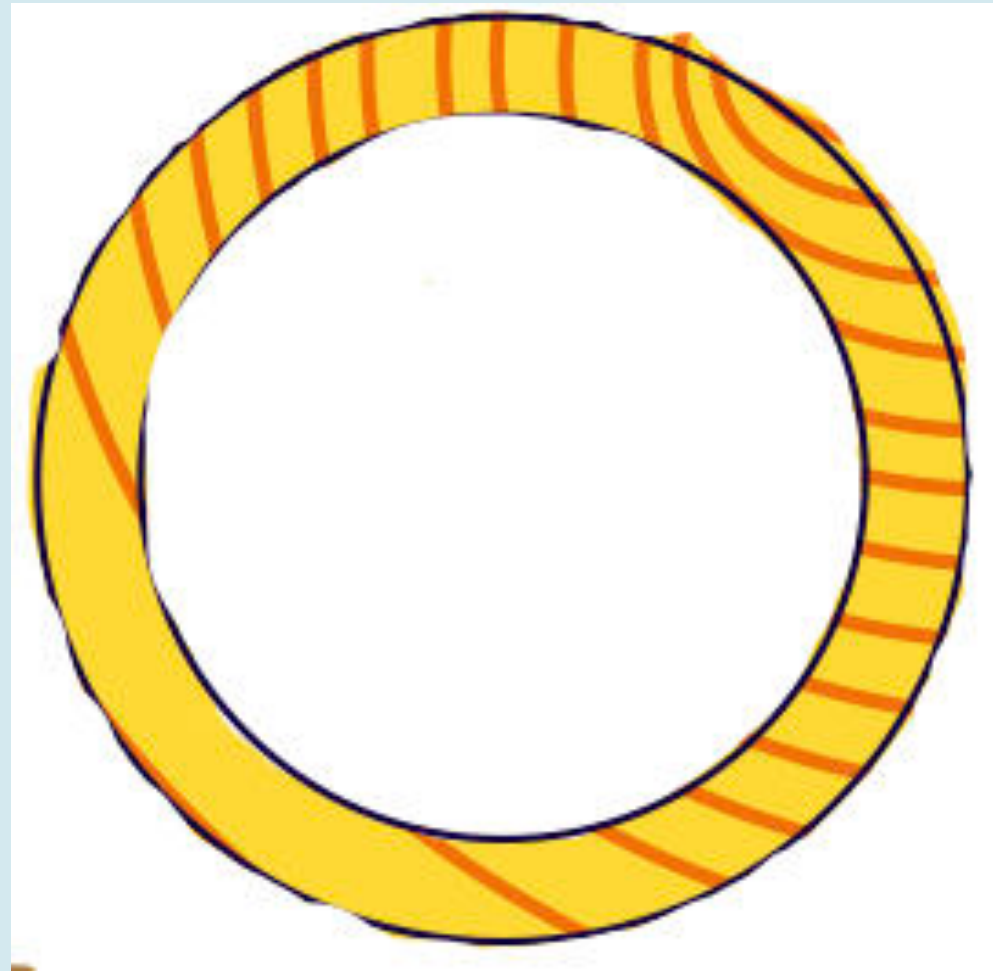


# Kopie 1:1

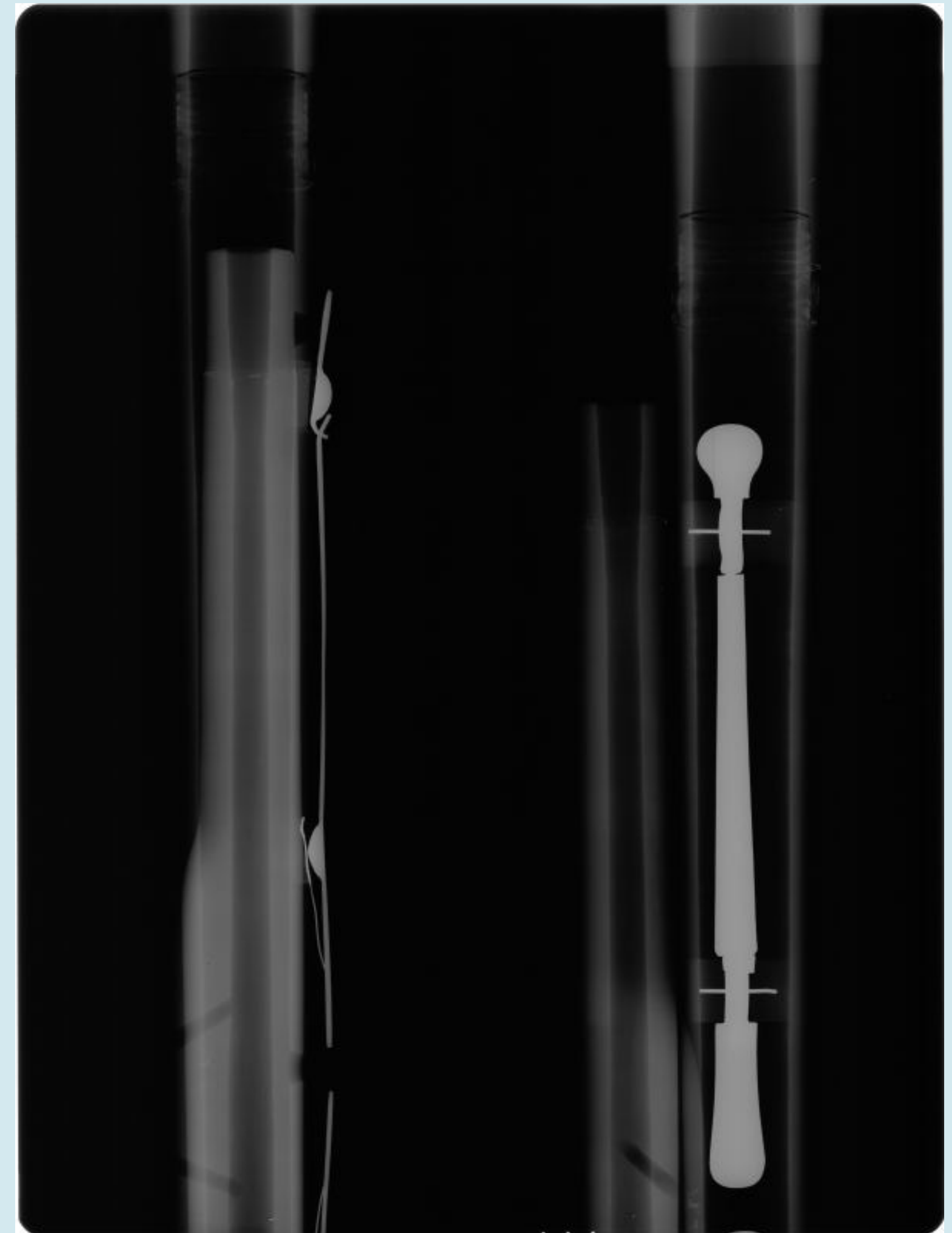




Kopie 1:1



Kopie 1:1





Ondřej Šindelář

[sindelar.ondrej@gmail.com](mailto:sindelar.ondrej@gmail.com)

+420 736 282 754